

## RS Venture Connect World Championship 2024

### Notice of Race (NoR)

V1.2 – 02.05.2024

#### 1 Rules

- 1.1 The regatta will be governed by the rules as defined in *The 2021-2024 Racing Rules of Sailing (RRS)*. Other documents under RRS Definition: Rule (g) include:
  - 1.1.1 [DP] The WC Support Person Regulations (including Coach Boats) (STR).
  - 1.1.2 For the medal race/ final series World Sailing addendum Q, as posted on the official digital event notice board, will be used. This takes precedence over any conflicting instructions.
- 1.2 RYA prescriptions will apply.
- 1.3 The following rules, procedures and systems will apply:
  - 1.3.1 Para-Classification Rules for World Sailing January 2018 as amended by this NOR.
  - 1.3.2. The Para World Sailing Race Management Manual (RMM) January 2024, will apply as amended by this Notice of Race.
  - 1.3.3. World Anti-Doping Code Regulations will apply. Competitors are reminded of the World Sailing Rules and Regulations concerning the use of banned methods and substances, which are contained in the World Sailing Anti-Doping Code. Drug testing may take place during this event. Additional information is available at <https://www.wada-ama.org>.
  - 1.3.4. World Sailing Equipment Inspection Regulations and Support Boat Regulations will apply.
  - 1.3.5. RS Venture Connect Class Rules on supplied equipment regulations apply.
- 1.4 Decisions of the International Jury will be final as provided in RRS 70.5.
- 1.5 A boat shall neither make radio transmissions while racing nor receive radio communications not available to all boats, except in an emergency or when using equipment provided by the race committee. This restriction also applies to mobile telephones.
- 1.6 RRS 44.1 and RRS P2.1 are changed so that the Two-Turns Penalty is replaced by the One-Turn Penalty.
- 1.7 In all rules governing this regatta;

- 1.7.1 Both 'athlete' and 'competitor' mean a person competing or intending to compete in the event.
- 1.7.2 [SP] denotes a rule for which a standard penalty may be applied by the race committee or the technical committee without a hearing or a discretionary penalty applied by the International Jury with a hearing. This changes RRS 63.1 and A5; and
- 1.7.3 [NP] denotes a rule that shall not be grounds for protests by a boat. This changes RRS 60.1(a).
- 1.7.4 [DP] denotes a rule for which the penalty is at the discretion of the International Jury and may be less than disqualification. This changes RRS 64.1
- 17.8 Support Person Regulation (SPR) 6.1 will not apply to World Sailing Appointed Coaches or Technical Delegate
- 17.9 If there is a conflict between languages, the English language text will take precedence.

## 2 Venue / Hosts

- 2.1 The regatta location is: Rutland Sailing Club, UK
- 2.2 The event hosts are: RS Sailing and Rutland Sailing Club, hereafter referred to as the **OA**

## 3 Eligibility / Equipment

- 3.1 Gender:
  - 3.1.1i) Teams entered shall , where possible, be mixed gender, consisting of 1 (one) female and 1 (one) male athlete.
  - 3.1.1ii) Teams wishing to enter sailors of the same gender are requested to obtain a formal waiver from the RS Venture Connect Class, stating the circumstances for why the team is unable to meet the criteria listed in NoR section 3.1.1i),
- 3.2 Disability:
  - 3.2.1(i) For teams wishing to compete for awards in the 'Para' category of the event, Para World Sailing minimal disability (MD) classification criteria must apply to both sailors entered as being part of a team, with each sailor requiring a current / valid classification status at the time of the event.
    - (ii) For teams wishing to compete for awards in the 'Inclusive' category of the event, at a self-declaration of a minimum disability, condition, or illness that affects daily life must apply to one of the two athletes entered.
    - (iii) For teams wishing to compete for awards in the 'Open' category of the event, non-disabled sailors are able to register. There is no disability requirement for this category.

- 3.2.2 All athletes requiring a classifiable disability as part of their entry to the event must either hold a current and valid International Classification as per the World Sailing Para Classification rules ([WSParaClassificationRulesMay2019-\[25120\].pdf](https://www.sailing.org/WSParaClassificationRulesMay2019-[25120].pdf) ([sailing.org](https://www.sailing.org))).
- 3.2.3 Teams entered where the combination of sailors does not meet the criteria stated in NoR section 3.2.1i) and 3.2.1ii) will not be eligible to complete in the event. In this situation, any event registration fees that may have been paid by the team related to their attendance in the event will **NOT** be eligible for a refund.
- 3.2.4 Classification appointments will **NOT** be available at this event.
- 3.3 Equipment:
- 3.3.1 The regatta will be sailed using RS Venture Connect sailboats featuring the 2 seat side-by-side seated control, system ('SCS') configuration and using the 'World Sailing / Para Race' sails including the larger Black Race Spinnaker, the Mylar Race Mainsail and Race Jib.
- 3.4 All competitors must be affiliated to and in good standing with their respective World Sailing Recognized Member National Authority (MNA) at the time of the event. These authorities are listed on the World Sailing website at [www.sailing.org/about/members/mnas](http://www.sailing.org/about/members/mnas).
- 3.5 Protest regarding classification may be filed with the Field of Play Manager at the the event venue at a point in time not later than "first appearance".

## 4 Entry Fees

- 4.1 Fees listed on the event registration platform ([www.rssailing.club/event-details/?id=547](http://www.rssailing.club/event-details/?id=547)) are in £ GBP (Pounds Sterling) and include any local taxes that may be applicable.
- 4.2 Fees

'Early Bird' entry fee for registrations completed prior to 23:59 UTC on July 31 <sup>st</sup> , 2024	Late entry Fee , applicable to entries made between August 1 <sup>st</sup> and 23:59 UTC on September 1 <sup>st</sup> , 2024	Charter boat fee (x8 boats supplied by RS Sailing)
325	400	350
Entries made after September 1 <sup>st</sup> , 2024 are accepted at the discretion of the event authority		

- 4.3 The event entry fee excludes the cost of a charter boat. Teams requiring charter boats for use at the event will be able to select this option at the point of completing the online registration. Due to the limited availability of supplied equipment, the charter boats will be limited to the first 24 teams wishing to book use of this equipment.
- 4.4 Teams wishing to bring their own boats to the event are welcome to do so but they must ensure that their boats meet the current class-specific equipment rules in order

to be eligible to compete. Teams should contact the RS Venture Connect Class if they are in any doubt about whether their boat/s meet the current class specifications.

4.5 Entry Fee refund policy:

- 4.5.1 A full refund of the total fee paid, including any payments related to the charter of supplied equipment, less £10 GBP administration fee, is available for cancellations made up to midnight on August 1<sup>st</sup> 2024.
- 4.5.2 A refund of 50% of the total fee paid, including any payments related to the charter of supplied equipment, is available for cancellations made by midnight (00:00 UTC) on August 31<sup>st</sup>, 2024.
- 4.5.3 No refunds will be available for cancellations made after September 1<sup>st</sup>, 2024.

## 5 [NP] [DP] Insurance

- 5.1 Each 'person in charge' (see RRS 46) shall hold a valid insurance certificate showing proof of third-party liability with a minimum coverage per incident of € 1,500,000 (or equivalent) for the event.
- 5.2 The Organizing Authority is not responsible for verifying the status or validity of insurance certificates.
- 5.3 For teams bringing their own boats; each boat shall hold a valid insurance certificate showing proof of third party liability with a minimum coverage per incident of € 3,000,000

## 6 Risk Statement

Competitors and support team members participate in the event entirely at their own risk and they are reminded of the provisions of RRS 4, 'Decision to Race'. Sailing is by its nature an unpredictable sport and therefore involves an element of risk. By taking part in the event, each competitor agrees and acknowledges that:

- 6.1 They are aware of the inherent element of risk involved in the sport and accept responsibility for the exposure of themselves, their crew and their boat to such inherent risk whilst taking part in the event;
- 6.2 They are responsible for the safety of themselves, their crew, their boat and their other property whether afloat or ashore;
- 6.3 They accept responsibility for any injury, damage or loss to the extent caused by their own actions or omissions;
- 6.4 By participating in any race, they are satisfied that their boat is in good order, equipped to sail in the event and they are fit to participate;
- 6.5 The provision of a race management team, patrol boats, umpires and other officials and volunteers by the organizer, does not relieve them of their own responsibilities;

- 6.6 The provision of patrol boat cover is limited to such assistance, particularly in extreme weather conditions, as can be practically provided in the circumstances.
- 6.7 They will familiarize themselves with any venue/event specific risks, adhere to rules and information produced for the venue/event and attend any venue/event safety briefings.

## 7 [DP] Media Rights

- 7.1 By participating in the Championship, competitors and appointed support persons automatically grant to the organizing authority, RS Venture Connect Class, Para World Sailing / World Sailing and event partners / sponsors, the right in perpetuity to make, use and show, from time to time at their discretion, any motion pictures and live, taped or filmed television and other reproductions of the athlete during the period of the competition without compensation.
- 7.2 Athletes may be required to pass through a 'mixed zone' on return to shore after on-water competition in order to take part in media conferences.
- 7.3 Athletes may also be asked to be available for interviews outside the formal mixed zone and media conferences, on either training or competition days.

## 8 [DP] Code of Conduct

- 8.1 Athletes and support persons shall comply with any reasonable request, if made, from regatta officials.
- 8.2 Athletes and support persons shall handle any boats or equipment provided by the organizing authority with proper care and seamanship, and in compliance with any written instructions.
- 8.3 Boats not racing shall avoid any racecourse area which is in use, and any official boats within this area.
- 8.4 Boats that are on a Course Area to which they are not assigned shall avoid the area where boats are racing and any official boat.
- 8.5 Boats shall be kept in their assigned places while they are in the boat park or designated on-water location.
- 8.6 No boats shall be hauled out during the regatta except with and according to the terms of prior permission of the event Race Committee
- 8.7 Underwater breathing apparatus or their equivalent shall not be used around boats between the preparatory signal of the first race and the end of the regatta.
- 8.5 The organizing authority may reduce or remove a prize in the case of misconduct or refusal to comply with any reasonable request, including attendance at official functions.

## 9 [DP] Identification and Advertising

- 9.1 All boats may be required to display identification numbers and/or sponsors advertising for the duration of the event in accordance with World Sailing Regulation 20.4. These items will be supplied free of charge by the Organizing Authority at registration.
- 9.2 Competitors are not permitted to display advertising or other promotional material on supplied equipment (charter boats) except for what is provided by the Organizing Authority.

## 10 [DP] [NP] Safety Regulations

- 10.1 Competitors shall wear personal flotation devices at all times as per RMM 8.1
- 10.2 [SP] Boats not leaving the pontoon / dock or shore for a scheduled race shall promptly notify the Race Office.
- 10.3 [SP] Before leaving to race on each scheduled racing day, a competitor from each boat shall personally sign out their team on the designated form.
- 10.4 [SP] Within 30 minutes after returning ashore, but no later than the protest time limit for that event, a competitor from each boat shall personally sign in their team on the designated form.
- 10.5 A boat that retires from racing shall notify the race committee before leaving the racing area, or if that is not possible, shall notify the Race Office as soon as possible after returning ashore but no later than the protest time limit, by completing a retirement declaration form.
- 10.6 Boats shall avoid any commercial water-based traffic and shall cross any shipping channels that may be present in and around the field of play as close to right angles as practical, unless changed in the Sailing Instructions.
- 10.7 [SP] Flag AP over H displayed ashore means 'Boats shall not leave the shore or pontoon / dock. Wait for further instructions.' This adds to Race Signals AP over H.
- 10.8 When the race committee displays flag V with repetitive sounds, all official and support boats shall monitor the race committee radio channel for that racing area for search and rescue instructions. The race committee will announce 'Flag Victor' using the designated VHF Channel.

## 11 Communications with Competitors

- 11.1 Notices to competitors will be posted on the official notice board (Location to be confirmed).
- 11.2 Notices to competitors may also be posted on a pre-determined satellite notice board at the event venue, but in the event of conflict between sources, the official notice board in described NoR 11.1 will govern.

## 12 [DP] [NP] Replacement of Crew or Equipment

- 12.1 Substitution of competitors will not be allowed without prior written approval of the Race committee.
- 12.2 Substitution of damaged or lost equipment will not be allowed unless authorized by the Technical Committee. Requests for substitution shall be made to the committee at the first reasonable opportunity.
- 12.3 Additional equipment will not be allowed unless authorized by the RS Venture Connect Class Representative as specified in Addendum C. Requests for substitution shall be made to the race committee at the first reasonable opportunity.

## 13 [DP] Measurements

- 13.1 A boat or equipment may be inspected at any time for compliance with the class rules and sailing instructions. On the water, a boat can be instructed by a race committee equipment inspector or measurer to proceed immediately to a designated area for inspection.
- 13.2 The fact that race officials may conduct inspections of a boat does not reduce the responsibilities of each competitor set out in this Notice of Race and the EIR.
- 13.3 Schedule for measurement is listed in NoR 15.1.
- 13.4 The use of adaptations required by disability that do not meet class rules etc must be applied for from the Adaptions Committee. The Adaptions committee consists of the event TD, Field of Play Manager, PRO, Class representative and classifiers (remote).
  - 13.4.1 To apply for the use of adaptations, please email World Sailing Para Manager: [Hannah.stodel@sailing.org](mailto:Hannah.stodel@sailing.org)
  - 13.4.2 Any adaptations that were approved for use at the World Sailing Championships in the Hague 2023 will not require re-approval unless modification or alteration has occurred.

## Format

- 14.1. The regatta consists of a series of flights, the number of which will be dependent on the total number of registered teams.
- 14.2. The event hosts / organizing authority may change the format, terminate or eliminate any flight, when the remaining time scheduled does not permit the completion of the intended format
- 14.3. Places 1- 3 for each category of competing team, that being 'Para' and 'Inclusive' will, be determined by their results during the overall series.

## 15 Schedule and Course Assignments

- 15.1 The schedule for the event will be as follows:

Date	Description	Time
Saturday, September 28th	Para World Sailing Inclusive Development Program (IDP) Coaching Clinic day 1	0900 – 18:30
	Registration / Measurement	ALL DAY
	Para World Sailing Inclusive Development Program (IDP) Coaching Clinic day 1	0900 – 1500
Sunday, September 29 <sup>th</sup>	Practice Races	1530 – 1830
	Registration / Measurement	ALL DAY
	Welcome dinner	1930
	Competitor Briefing	0830
Monday, September 30 <sup>th</sup>	Flight-based 'Round Robin' racing day 1	1000 – 1800
	Competitor Briefing	0830
Tuesday, October 1 <sup>st</sup>	Flight-based 'Round Robin' racing day 2	1000 – 1800
	Competitor Briefing	0830
Wednesday, October 2 <sup>nd</sup>	Flight-based 'Round Robin' racing day 3	1000 – 1800



Thursday, October 3 <sup>rd</sup>	Competitor Briefing	0830
	Flight-based 'Round Robin' racing	1000 – 1500
	day 4	1530
	Awards Ceremony	

- 15.2 Addendum B shows the location of racing areas.
- 15.3 The provisional race schedule, including the time of the first warning signals, and assignments of Events to course areas will be posted as RSI Addendum 1 no later than one week before the first race of the event.
- 15.4 An update to RSI Addendum 1 will be posted daily no later than 2000 on the previous evening of any race affected.
- 15.5 Any reassignment of Events to Course Areas will be posted; before 0900 on the day it will take effect, or
  - 15.5.1 when flag AP is displayed ashore, 30 minutes before flag AP for that event or fleet is removed; or
  - 15.5.2 when flag AP is displayed afloat, the course area may be changed. A race committee boat will display flag L over the event(s) flag and move to the new Course Area.
- 15.6 Races not sailed on the scheduled day may be sailed on the following day at the discretion of the race committee, including sailing an opening series race on the provisional medal race day.
- 15.7 On the final day, no first warning signal will be made after 16:00 hrs.
- 15.8 Schedule of Practice Races:
  - 15.8.1 Boats be available for practice racing on the afternoon of Sunday, September 29<sup>th</sup>
  - 15.8.2 A form to reserve a slot for this activity will be available at the Race Office from the morning of Saturday September 28<sup>th</sup>.
  - 15.8.3 Practice racing slots may be limited to a specific time accordingly to number of available boats. Preference will be given to teams who have not been involved in the Para World Sailing Inclusive Development Program (IDP) Clinic prior to the event.

## 16 Time limits and target times

16.1 For the series, time limits and target times are as follows:

Time Limit	Mark 1 Time Limit	Finish Window	Target Time
45	15	10	25-30

16.3 If no boat rounds Mark 1 within the Mark 1 time limit, the race committee will abandon the race.

16.4 Any boat that does not finish within the Finish Window (time after the first boat finishes) shall be scored DNF without a hearing. This changes RRS 63.1 and A5.

## 17 Scoring

17.1 The Low Point System of RRS Appendix A will apply.

17.2 When fewer than three races have been completed, a boat's series score will be the total of her race scores. When three or more races have been completed, a boat's score will be the total of her race scores excluding her worst score.

17.3 Three races are required to be completed by all competitors in order to constitute a valid event.

17.4 If a competitor is unable to start a race because the organizer cannot supply a boat for them, the race committee will score a boat for this race according to RRS A10(b) without the hearing. This changes RRS A2 and A5

17.5 To request correction of an alleged error in posted race or series results, a boat may complete a scoring enquiry form available at the Race Office.

## 18 International Jury

18.1 An International Jury will be appointed in accordance with rule RRS 91(b).

## 19 Prizes and Social Function Requirements

23.1 Medals will be awarded to the top 3 boats in the competition for both the 'Para' and 'Inclusive' categories of the event.

23.2 World Sailing may request to reduce or remove a 'Para' medal in the case of misconduct or refusal to comply with any reasonable request, including attendance at official functions.

## 20 Further Information

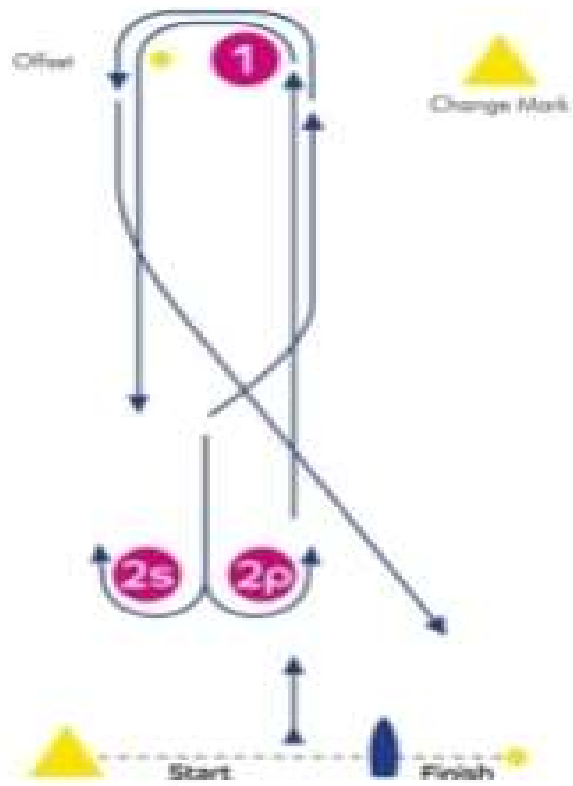
Event Hosts / Organizing Authority – RS Sailing and Rutland Sailing Club:  
[www.rutlandsailingclub.co.uk/contact](http://www.rutlandsailingclub.co.uk/contact)

RS Venture Connect Class Representative – Dan Jaspers: [dan@rssailing.com](mailto:dan@rssailing.com)

Event registration platform: [www.rssailing.club/event-details/?id=547](http://www.rssailing.club/event-details/?id=547)

**Addendum A – Course Illustrations**

**WL**

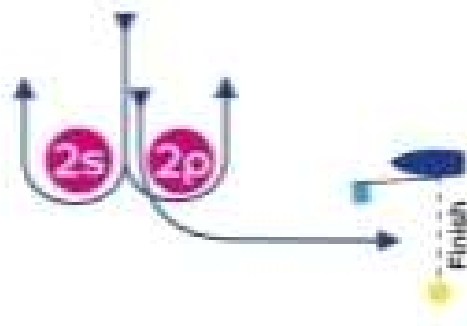
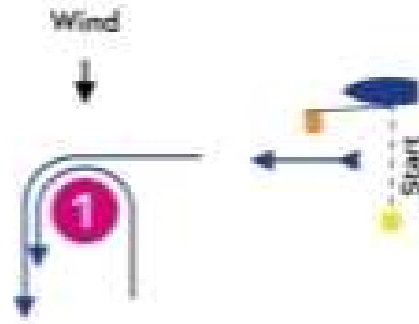


Course:

Signal	Mark Encircling Order
WL	Start - 1 - Offet - 2s or 2p - 1 - Offet - Finish

Course Illustrations continued.

A

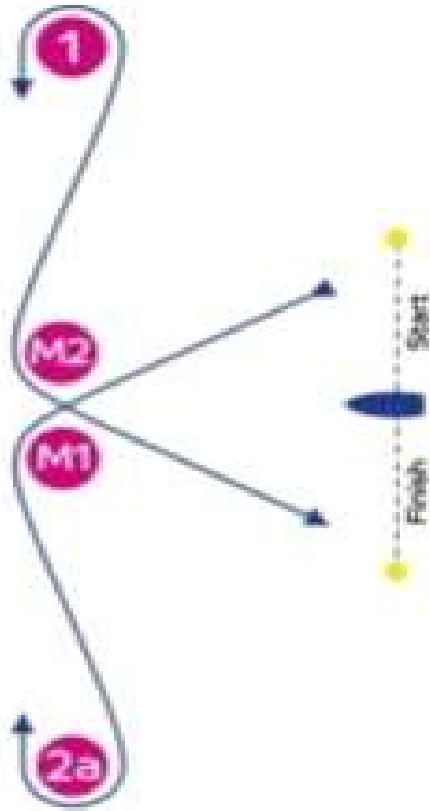


Course:

Signal	Mark Bounding Order
A1	Start - 1 - 2s or 2p - 1 - 2p - Finish
A2	Start - 1 - 2s or 2p - 1 - 2s or 2p - 1 - 2p - Finish

Course Illustrations continued.

**B**

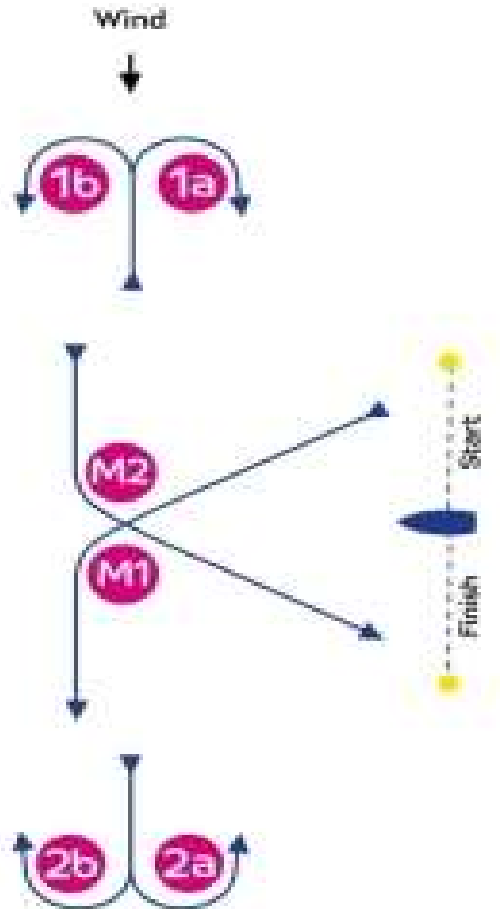


Course:

Signal	Mark Rounding Order
B1	Start - M1 - 2a - 1a - M2 - Finish
B2	Start - M1 - 2a - 1a - 2a - 1a - M2 - Finish

Course Illustrations continued.

**BG**

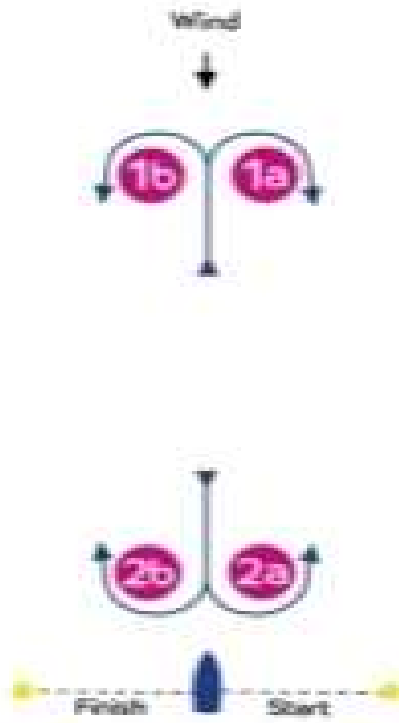


Course:

Signal	Mark Rounding Order
B1	Start - M1 - 2a or 2b - 1a or 1b - M2 - Finish
B2	Start - M1 - 2a or 2b - 1a or 1b - 2a or 2b - 1a or 1b - M2 - Finish

Course Illustrations continued.

C



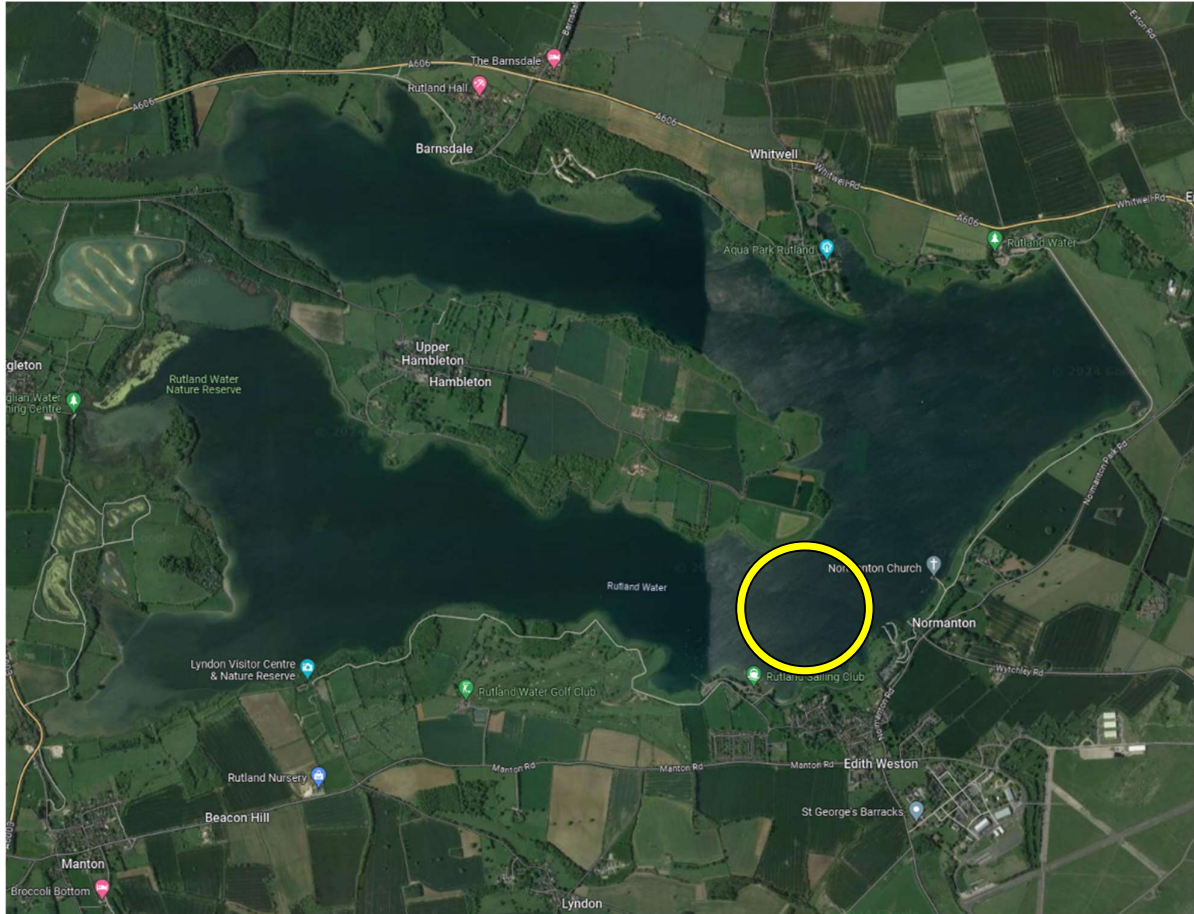
Course:

Signal	Mark-Rounding Order
C1	Start - 1a or 1b - 2a or 2b - 1a or 1b - Finish
C2	Start - 1a or 1b - 2a or 2b - 1a or 1b - 2a or 2b - 1a or 1b - Finish



## Addendum B

### LOCATION OF RACE AREA



## Addendum C

### BOATS PROVIDED BY THE ORGANIZING AUTHORITY

#### 1 Boats

- 1.1 RS Venture Connect sailboats will be provided by RS Sailing. Teams chartering these boats shall, as part of their attendance at the event, refrain from modifying them or cause them to be modified in any way except that
  1. (a) a compass may be tied or taped to the hull or spars;
  2. (b) wind indicators, including yarn or thread, may be tied or taped anywhere on the boat providing that they can easily be removable.
- 1.2 Any additional equipment shall have received formally issued class approval prior to the first day of racing and may be used providing that attachments do not puncture and are not bonded to the surface of the boat or sails. No alterations shall be made to any part of the boat, its equipment, spars or fittings, or fittings removed, even if subsequently replaced, without the written approval of the Technical Committee.
- 1.3 All equipment provided with the boat for sailing purposes shall be in the boat while afloat.
- 1.4 The penalty for not complying with one of the above instructions will be disqualification from all races sailed in which the instruction was deemed by the race committee to have been broken.
- 1.5 Competitors shall report any damage to or loss of equipment, however slight, to the organizing authority's representative immediately after securing the boat ashore. The penalty for breaking this instruction, unless the protest committee is satisfied that the competitor made a determined effort to comply, will be disqualification from the race most recently sailed.
- 1.6 Failure of supplied equipment will not be grounds for redress. This changes RRS 60.1(b).
- 1.7 Class rules requiring competitors to be members of the class association will not apply.